
	1
1	3
2	18
3	30
4	43
5	51

“

13 **98**

14 **111**

15 **116**

16 **120**



“ ”



4

70

“

”

“

”

“

”



1

1.1

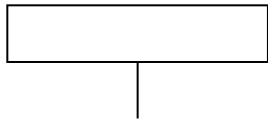
1.1.1

1.1.2

1.1.3

1.1.3.1

1.1.3.2

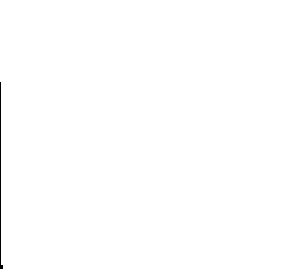
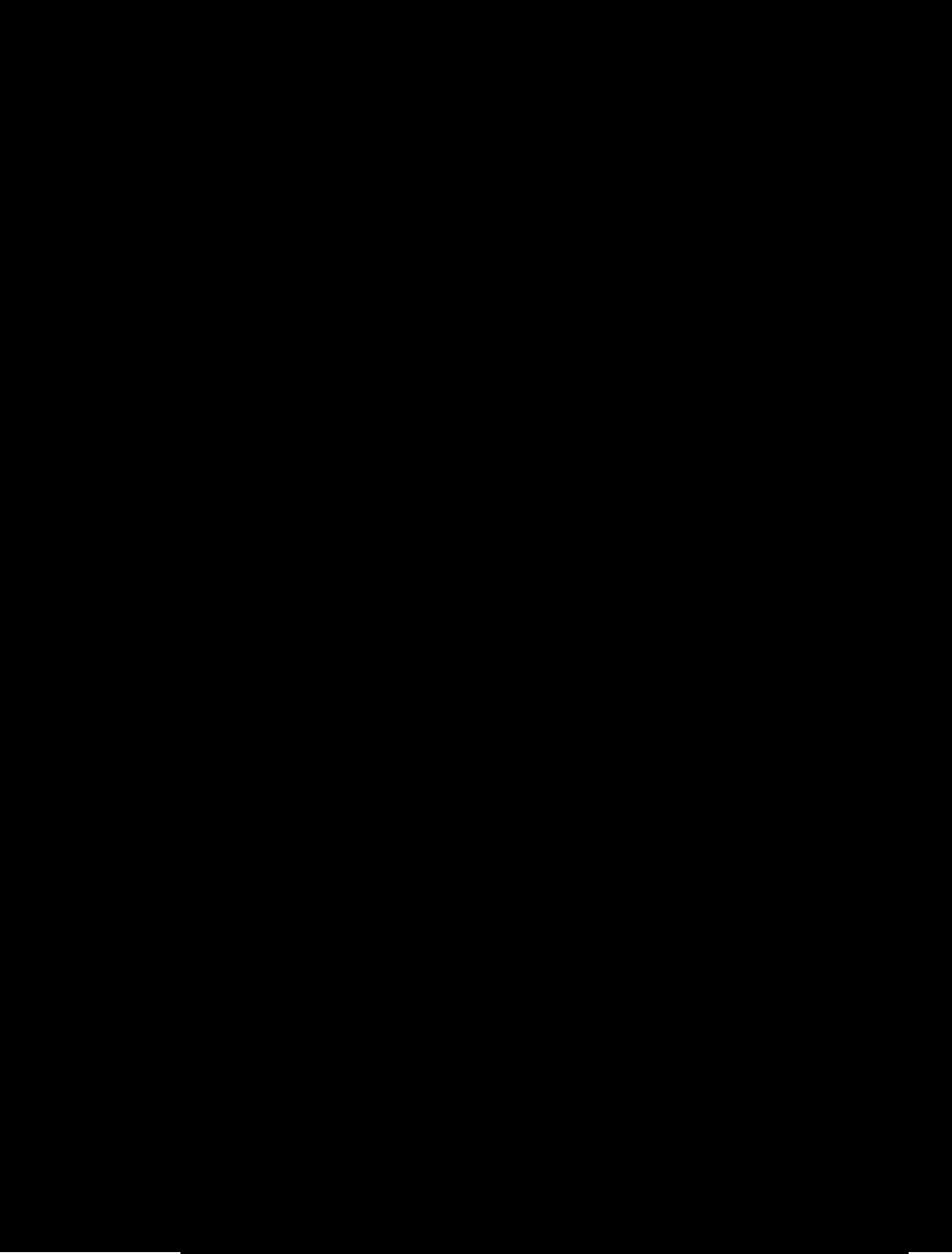


1.3.2

1.3.3

1.4

1.4.1



1.4-2

GB3095-1996

1.5.3

1.5-3

			(t/d)				(t/d)	

1.5.4

1.6

2

2.1

“

”

“

”

“

”

2.1





2.3

2.3.1

2.3-1

				1~4#

AG÷+X • £'''

				1~4#

2.3.2



2.4

2.4.1



2.4.2

2.4.3

3

3.1

3.1.1

3.1.2

3.1.3

3.1.4

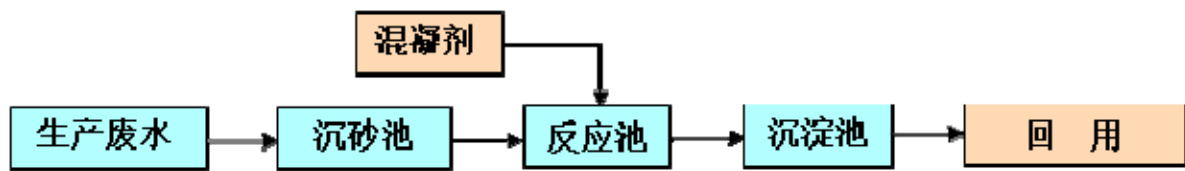
3.1.5

3.1.6

3.1.7



3.2.1.2



3.2-1

3.2.1.3

3.2.1.4

3.2.1.5



3.2.3

3.2.3.1

3.2.3.2

3.2.3.3

3.3

4

4.1

4.1.1

4.1-1

--	--	--

4.1.2

4.1-2



4.3

“ ”

5

5.1

5.2

5.3

5.3.1



5.3.2

5.3.3

5.3.4

5.3.5

5.4

6

6.1

6.1.1

3

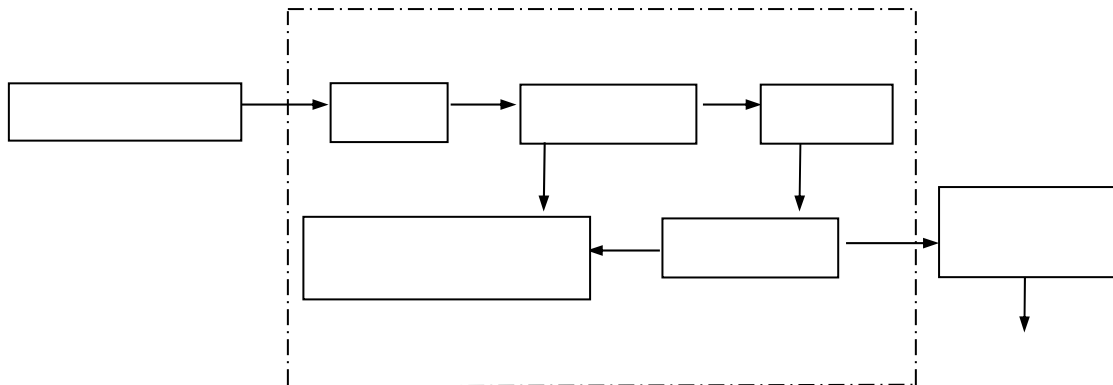
6.1.2





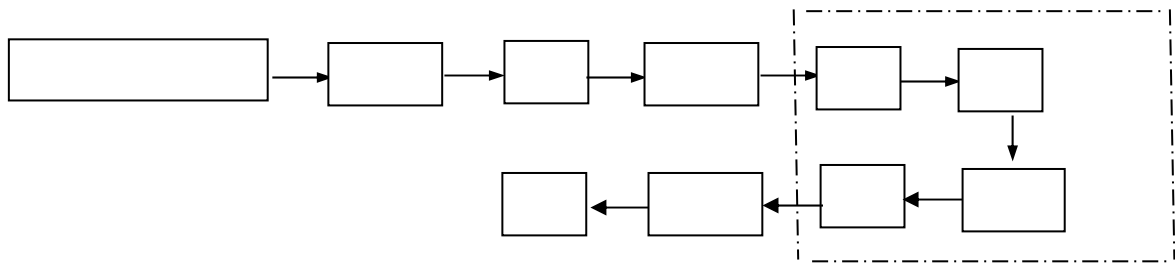
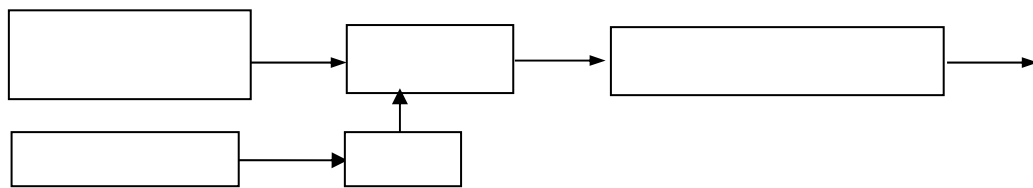
6.1-1

6.1.2.1



6.1-2

6.1.2.2



6.1-3

6.1.3

6.1-1

mg/L pH

6.1-2

6.2

6.2-1

6.2-2

7

7.1

7.2



7.2-1

7.3

7.3-1

7.3-2

7.3-3

7.3-4

ug/m³

8

8.1

8.2

8.3

1.

8.3-1

2.

3.

4.

5.

8.3-2



9

9.1

9.2

1.



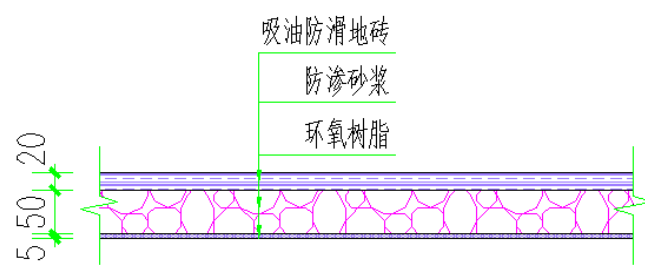
9.2-1



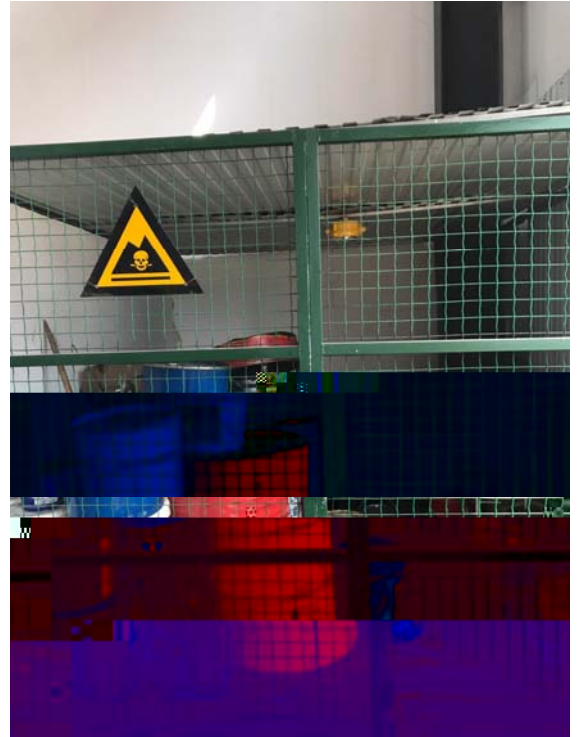
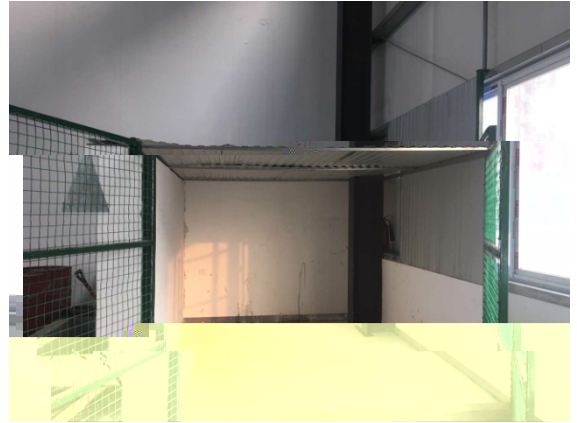
2.

×

×



9.2-2



9.2-3

9.3

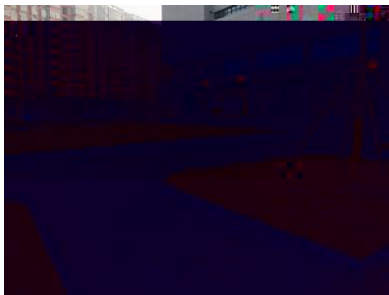


10

10.1



10.1-1



10.1-2

10.2

10.2.1

1.

2.



3.

10.2.2





10.2.3

10.2.3.1

10.2-3

Protozoa																		
<i>Diffugia</i>																		
<i>Arcella vulgaris</i>																		
<i>Strombidium</i>																		
<i>Litonofus</i>																		
<i>Halteria grandinella</i>																		
<i>Colpoda cucullus</i>																		
<i>Didinium</i>																		
<i>Tintinnopsis Sinensis</i>																		
<i>Cestropyxis aculeata</i>																		
<i>Strobilidium gyrans</i>																		
Rotatoria																		

Branchiopoda AD 75 Ga Dv Dvj

10.2.3.3

10.2-6

10.2.3.4

10.2.3.5

落

落



11

11.1

11.1.1

11.1.2

11.2

11.3

11.4

11.5

12

12.1

12.2

12.2.1

12.2.1.1

12.2.1.2

12.2.2

12.2.3

12.3

12.4

13

13.1

13.2

13.2.1

武汉海事局海事监管中心
(事故总指挥)

武汉市环保局

技术咨询专家评估

公司应急救援指挥领导小组

13.2.3

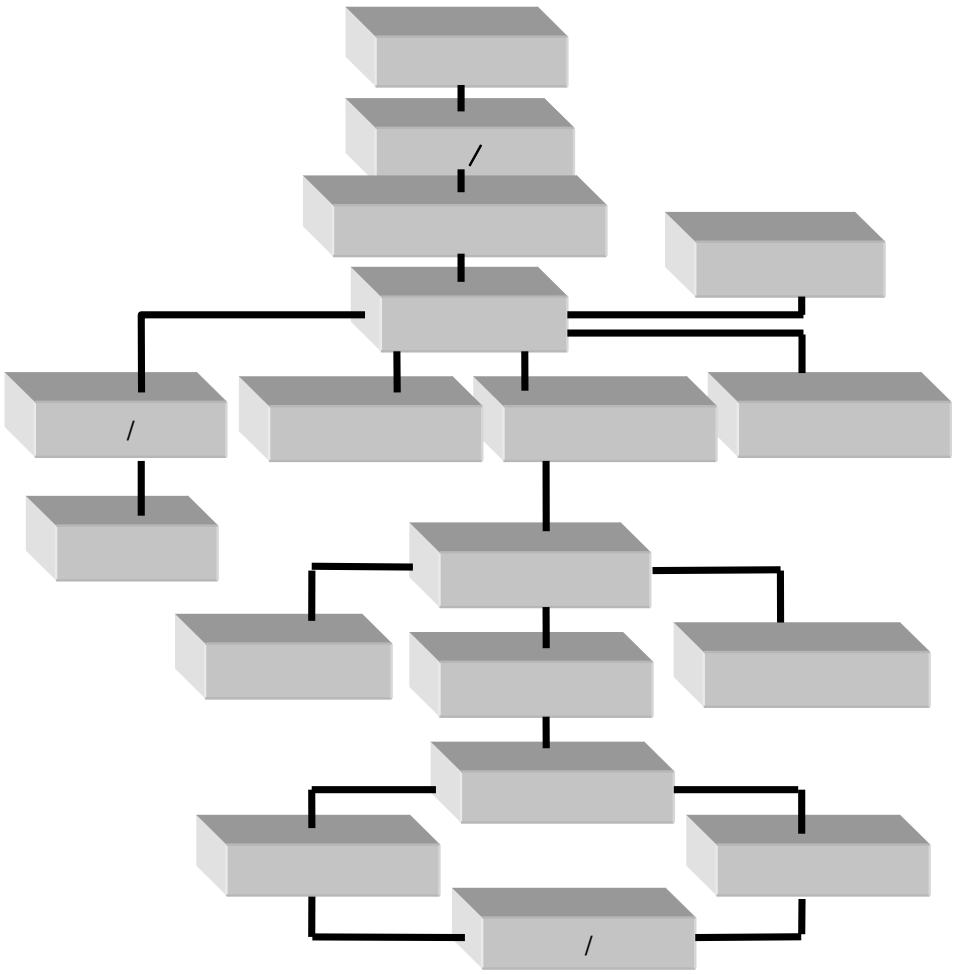
13.2.3.1

“ ”

“ ”

“ ”





13-2

13.2.5



13.2.6

13.2.7

13.2.8

13.3

14

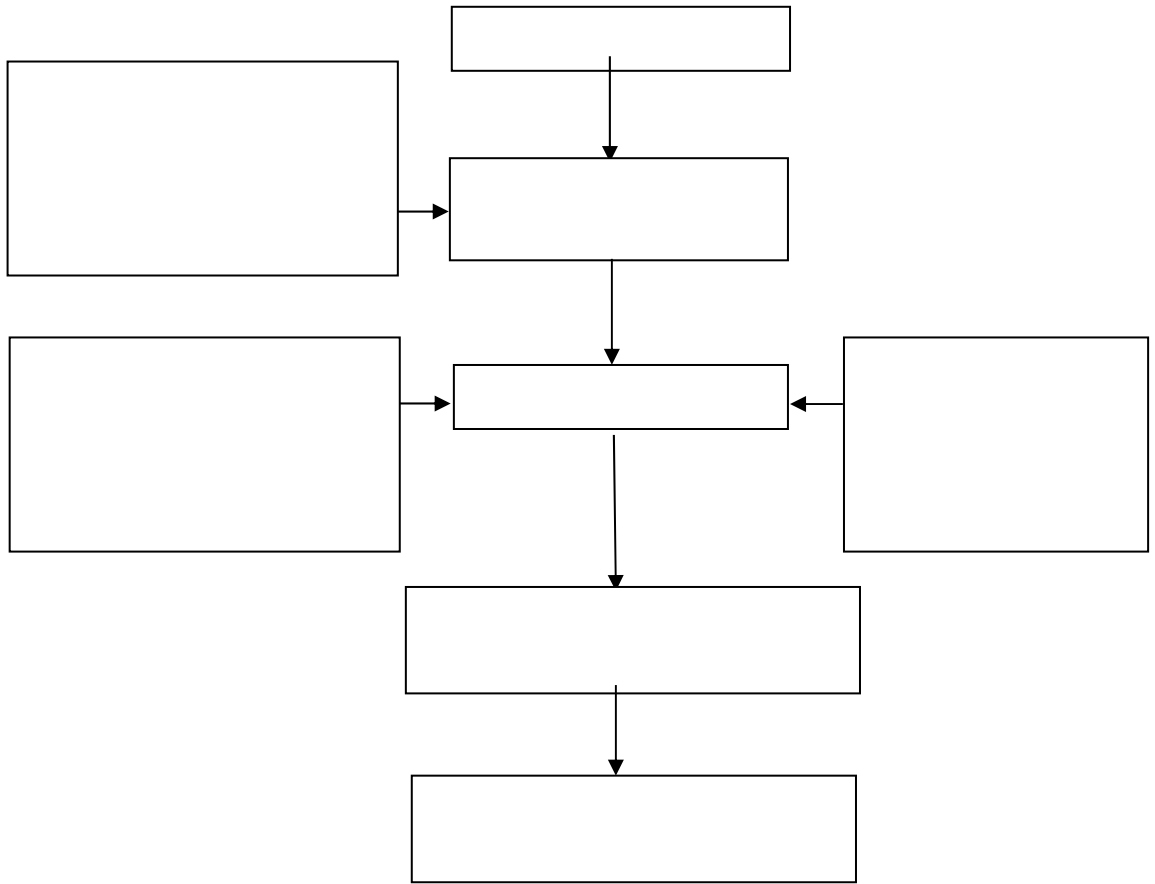
14.1

14.2

14.2.1

14.2.2

14.2.3



14.2-1

14.2.3

14.2.4

14.3

14.3.1

14.3.2

14.4

14.4.1

14.4.2

14.4-1

14.5

15.1

15.2

15.3

15.3.1

16

16.1

“

”

16.2

16.2.1

16.2.2

16.2.3

16.2.4

16.2.5

16.3

16.4

16.8

“ ”